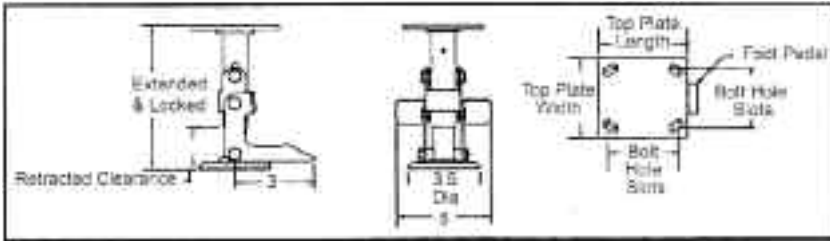


Designed to hold portable equipment at a desired location. Intended for use on level surfaces. Floor lock is activated by toe pressure on the extension pedal or released by toe touching one of the dual retractable plates. The large non-skid brake pad, under high spring compression, holds the portable piece of equipment until released. For best results, units should be used in pairs.



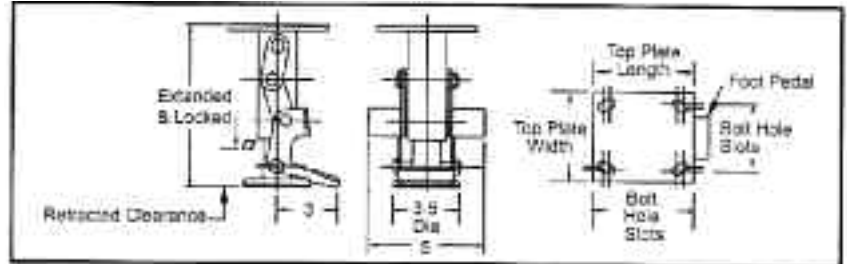
SELECT FEATURES & BENEFITS

- Top Plate** - Steel matching regular caster tops for easy installation
- Brake Shoe** - Large, non-skid, molded rubber for solid, no-slip contact
- Foot Pedal** - Adjusted by slight foot pressure for simple, instant locking
- Finish** - Corrosion resistant zinc plate for long use

FLOOR LOCK SPECIFICATIONS

Dia.	Series Number	Extended & Locked (in)	Retracted Clearance	Top Plate (in)	Bolt Hole Centers	Attaching Bolt Size	Weight (lb)	Floor Lock Number
4	16, 71	5-5/8	3/4	4 x 4-1/2	2-5/8 x 3-5/8 TO 3 x 3	3/8	3-1/4	16FL0480
5	16, 71	6-1/2	3/4	4 x 4-1/2	2-5/8 x 3-5/8 TO 3 x 3	3/8	3-1/2	16FL0580
6	16	7-1/4	3/4	4 x 4-1/2	2-5/8 x 3-5/8 TO 3 x 3	3/8	3-1/2	16FL0680
6	71	7-1/2	3/4	4 x 4-1/2	2-5/8 x 3-5/8 TO 3 x 3	3/8	3-3/4	71FL0680
8	16	9-1/2	3/4	4 x 4-1/2	2-5/8 x 3-5/8 TO 3 x 3	3/8	4	16FL0880
8	71	10-1/8	3/4	4 x 4-1/2	2-5/8 x 3-5/8 TO 3 x 3	3/8	4-1/2	71FL0880
4	12, 61	5-5/8	9/16	5 x 5-1/2	4-1/8 x 4-1/2	3/8	4	12FL0480
5	12, 61	6-1/2	1	5 x 5-1/2	4-1/8 x 4-1/2	3/8	4-1/4	12FL0580
6	12, 61	7-3/8	1	5 x 5-1/2	4-1/8 x 4-1/2	3/8	4-1/4	12FL0680
8	12, 61	9-1/2	1	5 x 5-1/2	4-1/8 x 4-1/2	3/8	4-3/4	12FL0880
4	62, 63, 72, 81	5-5/8	9/16	4-1/2 x 6-1/4	2-7/16 x 4-15/16 TO 3-3/8 x 5-1/4	1/2	4	62FL0480
5	62, 63, 72, 81	6-1/2	1	4-1/2 x 6-1/4	2-7/16 x 4-15/16 TO 3-3/8 x 5-1/4	1/2	4-1/4	62FL0580
6	62, 63, 72, 81	7-1/2	1	4-1/2 x 6-1/4	2-7/16 x 4-15/16 TO 3-3/8 x 5-1/4	1/2	4-1/4	62FL0680
8	62, 63, 72, 81	10-1/8	1	4-1/2 x 6-1/4	2-7/16 x 4-15/16 TO 3-3/8 x 5-1/4	1/2	4-1/2	62FL0880
6	90	8	1	5 x 7-1/4	3-3/8 x 5-1/4 TO 4-1/8 x 6-1/8	1/2	6	90FL0680
8	90	10-1/2	1	5 x 7-1/4	3-3/8 x 5-1/4 TO 4-1/8 x 6-1/8	1/2	6-1/2	90FL0880

Built with the same ease of use and precision as our standard floor locks, the telescoping floor lock offers greater retracted clearance for traveling over ramps and obstructions.



SELECT FEATURES & BENEFITS

Top Plate - Steel matching regular caster tops for easy installation

Brake Shoe - Large, non-skid, molded rubber for solid, no-slip contact

Foot Pedal - Adjusted by slight foot pressure for simple, instant locking

Finish - Corrosion resistant zinc plate for long use

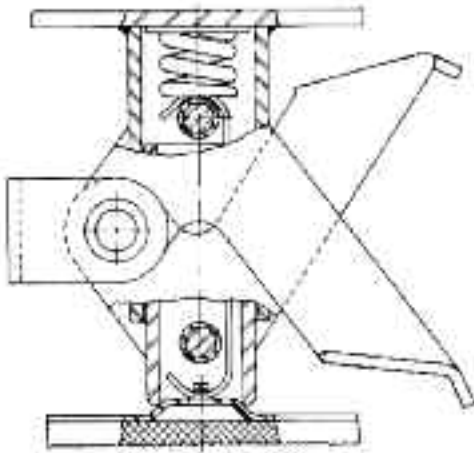
FLOOR LOCK SPECIFICATIONS

Dia.	Series Number	Extended & Locked (in)	Retracted Clearance	Top Plate (in)	Bolt Hole Centers	Attaching Bolt Size	Weight (lb)	Floor Lock Number
8	12	9-1/2	3-1/4	5 x 5-1/2	4-1/8 x 4-1/2	3/8	5	12LT8080
8	16	9-1/2	3-1/4	4 x 4-1/2	2-5/8 x 3-5/8 TO 3 x 3	3/8	4-1/4	16LT8080
8	62	9-1/2	3-1/4	4-1/2 x 6-1/4	2-7/16 x 4-15/16 TO 3-3/8 x 5-1/4	1/2	4-3/4	62LT8080
8	71	9-1/2	3-1/8	4 x 4-1/2	2-5/8 x 3-5/8 TO 3 x 3	3/8	4-1/2	71LT8080
8	90	9-1/2	3-1/8	5 x 7-1/4	3-3/8 x 5-1/4 TO 4-1/8 x 6-1/8	1/2	6-3/4	90LT8080

FEATURES

Double Pedal designed floor locks provide greater operator safety.

- The double pedals will not allow the operator to place his foot under the load
- Large steel disc has non-marking rubber pad for non-slip floor contact.
- All steel construction for ruggedness.
- Electro-plated finish.



Cut-away side view illustrates compression and retraction springs.

HOW TO OPERATE:

- Simply press down on the larger pedal to set positive locking force of 90 to 120 lbs. against the floor.
- Press down on the release pedal and spring quickly returns lock to non-operating position.
- Both pedals are out in front for safety and ease of operation.

FLOOR LOCK SPECIFICATIONS

OAH Extended (in)	OAH Retracted (in)	Weight (lb)	Width x Length (in)	Bolt Hole Spacing (in)	Bolt Hole Size (in)	Part Number
5-3/8	4-7/8	4-1/2	3-3/4 x 4-5/8	2-5/8 x 3-5/8 slotted to 3 x 3	25/64	558-FL
5-3/4	5	4-1/2	3-3/4 x 4-5/8	2-5/8 x 3-5/8 slotted to 3 x 3	25/64	534-FL
6-1/4	5-1/2	4-1/2	3-3/4 x 4-5/8	2-5/8 x 3-5/8 slotted to 3 x 3	25/64	614-FL
6-1/2	5-3/4	4-1/2	3-3/4 x 4-5/8	2-5/8 x 3-5/8 slotted to 3 x 3	25/64	612-FL
6-3/4	6	4-3/4	3-3/4 x 4-5/8	2-5/8 x 3-5/8 slotted to 3 x 3	25/64	634-FL
7-1/4	6-1/2	4-3/4	3-3/4 x 4-5/8	2-5/8 x 3-5/8 slotted to 3 x 3	25/64	714-FL
7-3/4	7	4-3/4	3-3/4 x 4-5/8	2-5/8 x 3-5/8 slotted to 3 x 3	25/64	734-FL
9-3/4	9	5	3-3/4 x 4-5/8	2-5/8 x 3-5/8 slotted to 3 x 3	25/64	934-FL
10-1/2	9-3/4	5	3-3/4 x 4-5/8	2-5/8 x 3-5/8 slotted to 3 x 3	25/64	1012-FL

4-16/FL / 4-16K/FL Series

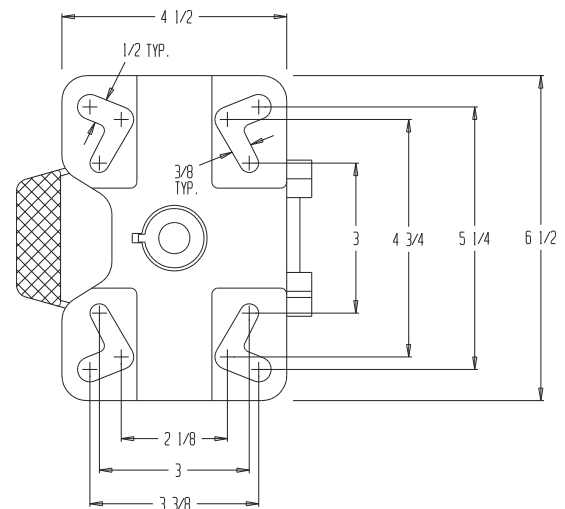
- Top plate fitting medium duty truck lock
- Extra heavy duty construction.
- Safely secures the truck in position while loading or unloading.
- Instantly released by slight downward pressure.
- Large diameter, non-skid rubber pad ensures firm grip to uneven ground surfaces.
- Operating force does not vary with load.
- Finish: Zinc plated or ROHS compliant

**4-16/FL & 4-16K/FL SPECIFICATIONS**

Wheel Diameter	Caster Series	Caster Height	Retracted Clearance	Approx. Weight	Part Number
6	16	7-1/4	1-1/2	3-3/4	4-16/FL-06
6	16K	7-1/2	1-1/2	3-3/4	4-16K/FL-06
8	16	9-1/2	1-1/2	3-3/4	4-16/FL-08
8	16K	10-1/8	1-1/2	3-3/4	4-16K/FL-08

FL-ADJ Series

This one of a kind floor lock includes an adjustable height foot pad that will work on carts with different caster heights. The adjustable height feature provides uniform locking and safety unlocking force for better ergonomic operation. This feature also keeps the floor lock working properly as spring and pads wear over time. Height is adjustable by turning the bottom pad. This unit has a bright zinc plated finish with heavy-duty cast steel construction. The bottom pad includes suction-cups for extra grip.

**FL-ADJ SPECIFICATIONS**

Part Number	Extended Height	Retracted Height	Used with Caster Size	Approx. Weight
FL-ADJ-4-6	5-1/2"to7-3/4"	4-1/2"to6-3/4"	4"-6"	9
FL-ADJ-8-10	8-1/4"to11-1/2"	6-1/4"to9-1/2"	8"-10"	1

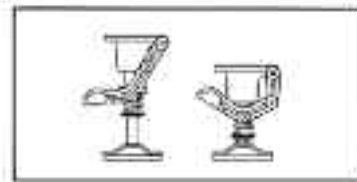
This lock lets you immobilize equipment in any desired location, but does not interfere with its movement when not in use. Platform trucks, fixture dollies or other castered items can be locked in place by a simple press of the foot. Locking action is created when a large, round friction face of nearly 10 sq. inches in area is pressed against the floor with the force of 70 to 100 lbs. This position lock does not lift equipment.

FEATURES

Brake Shoe - Large, non-skid, molded rubber for solid, no-slip contact

Foot Pedal - Adjusted by slight foot pressure for simple, instant locking

Finish - Painted



FLOOR LOCK SPECIFICATIONS

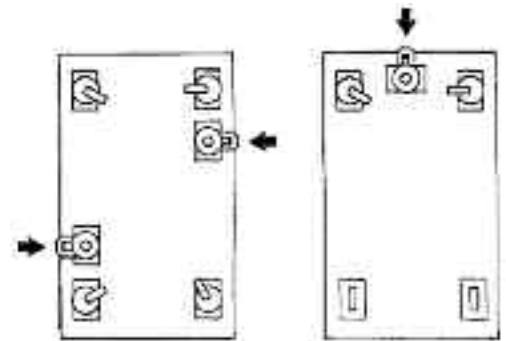
Diameter (in)	Extended Height (in)	Retracted Height (in)	Mounting Plate (in)	Bolt Hole Spacing (in)	Fastener Dia. (in)	Weight (lb)	Part Number
4	5-5/8	5	3-11/16 x 5-3/8	2-5/8 x 3-5/8	3/8	7.75	920FL04548
5	6-1/2	5-7/8	3-11/16 x 5-3/8	2-5/8 x 3-5/8	3/8	8	930FL05650
5	7-9/32	6-21/32	3-11/16 x 5-3/8	2-5/8 x 3-5/8	3/8	8.25	930FL05728
5	7-5/8	6-1/2	4-1/2 x 6	2-7/16 x 4-15/16	1/2	10.25	930FL05762
6	7-3/8	6-3/4	3-11/16 x 5-3/8	2-5/8 x 3-5/8	3/8	8.25	940FL06737
6	7-1/2	6-7/8	3-11/16 x 5-3/8	2-5/8 x 3-5/8	3/8	8.25	940FL06750
6	7-1/2	6-3/8	4-1/2 x 6	2-7/16 x 4-15/16	1/2	10.5	940FL06751
6	7-25/32	6-21/32	4-1/2 x 6	2-7/16 x 4-15/16	1/2	10.5	940FL06778
6	8-1/8	7	4-1/2 x 6	2-7/16 x 4-15/16	1/2	10.5	940FL06812
8	9-1/2	8-3/8	4-1/2 x 6	2-7/16 x 4-15/16	1/2	10.5	950FL08950
8	9-1/2	8-7/8	3-11/16 x 5-3/8	2-5/8 x 3-5/8	3/8	9.5	950FL08951
8	9-7/8	8-3/4	4-1/2 x 6	2-7/16 x 4-15/16	1/2	10.5	950FL08987
8	10-5/16	9-3/16	5-3/8 x 7-1/4	3-3/8 x 5-1/4	1/2	15	950FL081031
8	10-1/2	9-5/8	5-3/8 x 7-1/4	3-3/8 x 5-1/4	1/2	15.25	950FL081050
10	11-1/2	10-3/8	4-1/2 x 6	2-7/16 x 4-15/16	1/2	11.5	980FL101150
10	12-1/2	11-3/8	5-3/8 x 7-1/4	3-3/8 x 5-1/4	1/2	15.25	980FL101250
10	12-3/4	11-7/8	5-3/8 x 7-1/4	3-3/8 x 5-1/4	1/2	15.5	980FL101275

A position lock lets you immobilize equipment in any desired location, but does not interfere with its movement when not in use. Platform trucks, fixture dollies or other castered items can be locked in place by simple foot pressure. Locking action is created when a large, round friction face of nearly 10 sq. inches in area is pressed against the floor with the force of 70 to 100 lbs. The position lock does not lift the equipment as the spring-allowed applied force is not as heavy as the weight of the castered item.

FL-430, FL-550 and **FL-802** position locks have aluminum lacquer finish.
FL-410, FL-600, FL-800 and **FL-601** position locks have bronze lacquer finish.

INSTALLATION INFORMATION

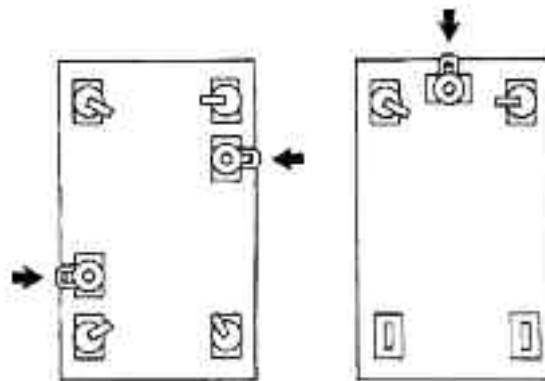
Where there are four swivel casters on a piece of equipment, use at least two position locks mounted diagonally to each other. When a piece of equipment has two swivel and two rigid casters, only one position lock is needed.



EXTRA HEAVY DUTY FLOOR LOCKS FOR CASTERED EQUIPMENT

FLOOR LOCK SPECIFICATIONS

Mounting Height (in)	Retracted Height (in)	Plate Size (in)	Bolt Hole Spacing (in)	Bolt Dia. (in)	Used with Caster Category	Weight (lb)	Part Number
5-5/8	4-11/16	3-11/16 x 5-3/8	2-5/8 x 3-5/8	3/8	4" Category 04	8	FL-410
5-13/32	4-11/16	3-11/16 x 5-3/8	2-5/8 x 3-5/8	3/8	4" Category 04	8	FL-430
7-1/4	6-1/4	4-1/2 x 6	2-7/16 x 4-15/16	1/2	6" Category 06	10	FL-550
7-3/4	6-3/4	4-1/2 x 6	2-7/16 x 4-15/16	1/2	6" Category 06	10	FL-600
8-1/8	7-1/8	4-1/2 x 6	2-7/16 x 4-15/16	1/2	6" Category 06	11-1/2	FL-601
9-15/16	8-7/8	5-3/8 x 7-1/4	3-3/8 x 5-1/4	1/2	8" Category 07	14	FL-802
10-1/4	9-1/4	5-3/8 x 7-1/4	3-3/8 x 5-1/4	1/2	8" Category 07	15	FL-800



Stainless Steel Floor Locks

Model Number	Height Unlocked	Height Locked	Bolt Hole Centers	Bolt Hole Spacing	Top Plate Size	Bolt Hole Size	Weight (Approx)
SSFL-4	4-1/2"	5-5/8"	3" x 3"	2-5/8" x 3-5/8"	4" x 4-1/2"	3/8"	3.5
SSFL-5	5-3/8"	6-1/2"	3" x 3"	2-5/8" x 3-5/8"	4" x 4-1/2"	3/8"	4
SSFL-6	6-1/2"	7-1/2"	3" x 3"	2-5/8" x 3-5/8"	4" x 4-1/2"	3/8"	4
SSFL-8	8-1/2"	9-1/2"	3" x 3"	2-5/8" x 3-5/8"	4" x 4-1/2"	3/8"	4



Stainless Steel Floor Locks (SSFL)



Standard Steel Floor Locks (FL)

Standard Steel Floor Locks

Model Number	Height Unlocked	Height Locked	Bolt Hole Centers	Bolt Hole Spacing	Top Plate Size	Bolt Hole Size	Weight (Approx)
FL-4	4-1/2"	5-5/8"	3" x 3"	2-5/8" x 3-5/8"	4" x 4-1/2"	3/8"	3.5
FL-5	5-3/8"	6-1/2"	3" x 3"	2-5/8" x 3-5/8"	4" x 4-1/2"	3/8"	4
FL-6	6-1/2"	7-1/2"	3" x 3"	2-5/8" x 3-5/8"	4" x 4-1/2"	3/8"	4
FL-8	8-1/2"	9-1/2"	3" x 3"	2-5/8" x 3-5/8"	4" x 4-1/2"	3/8"	4

Typical Floor or Truck Lock Installation Configuration



FEATURES

Efficient self adjusting floor lock for positioning trucks, stands and work benches for safer loading, unloading and work convenience. In most applications provides greater floor clearance than other type floor locks.

Body: Corrosion resistant cast aluminum alloy.

Foot: Firm grip non-marking rubber.

Mechanism: Spring loaded foot and shelf actuating levers to provide efficient braking.

Operating Height: Two models provide 6-1/2" to 10-1/2" operating height.

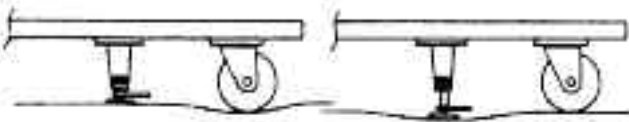
Built in flex and floating foot compensate for irregular floors.



2-5/8" x 3-5/8" to 3" x 3" slotted bolt holes
for 3/8" attachment bolts.
Lock nuts and lock washers recommended.

KEY BENEFIT

Ideal for Irregular Floors



Two Models Provide 6-1/2" to 10-1/2" Operating Height

Model Number	Recommended Operating Height (in)	Retracted Height (in)	Extended Height (in)	Approx. Weight (lb/each)
FL-515	6-1/2 to 7-1/2	5-1/2	8	3-1/2
FL-700	8 to 10-1/2	7	11	4

Floor locks should be selected with extended height slightly greater than associated caster overall height.

Shims or washers can be used to add additional height.